

Label Printing (Continuous Roll)

Continuous feed printers use label stock that is a continuous form, connected by a perforated edge.

Creating label stock

Unlike the common 8.5×11 laser printer paper, continuous roll label stock is often a custom size. For your printer to understand how big that individual label is, you need to define its size. To do this, you will need to create a custom paper size.

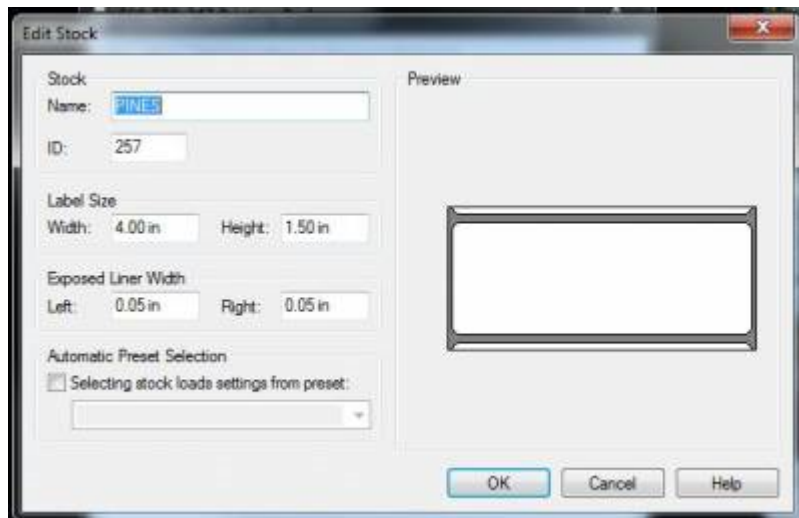
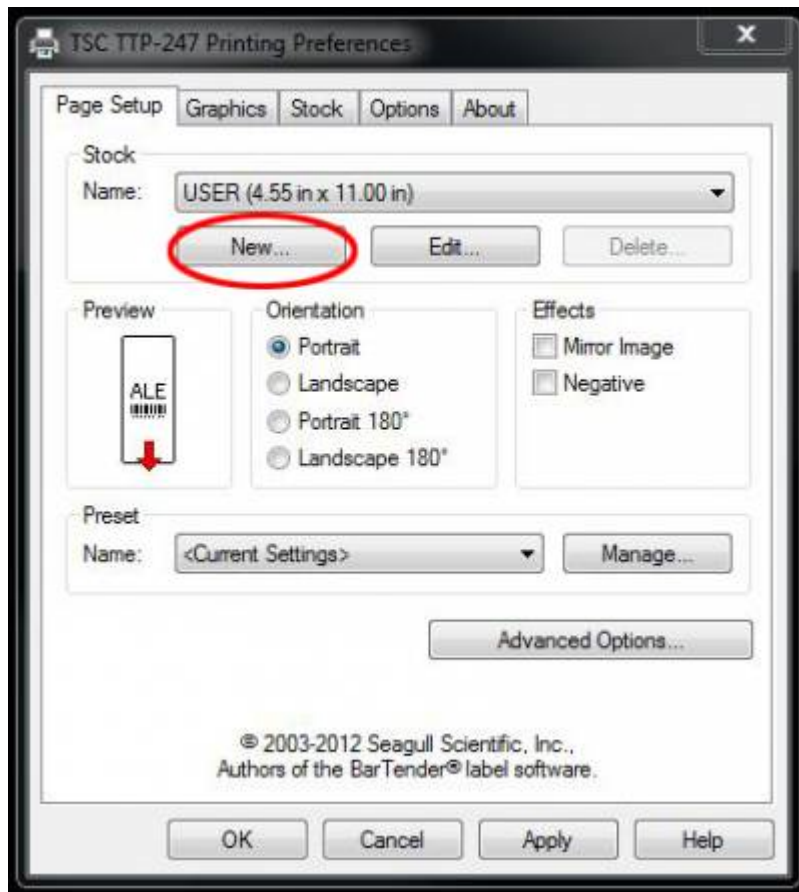
In Windows

1. Click the Windows Start button
2. Click **Control Panel**
3. Choose **Devices and Printers**
4. Right-click on your label printer
5. Select **Printing Preferences**

From here, each model of label printer will have its own drivers and interface, so the configuration screens will vary.

Example: TSC TPP-247

On the Page Setup tab, click New and define a new type of label stock. The label stock in this example is 4 inches wide and 1.5 inches tall. Click OK to Save the stock, then click Apply. After applying, exit (x or OK) out of the dialog box.



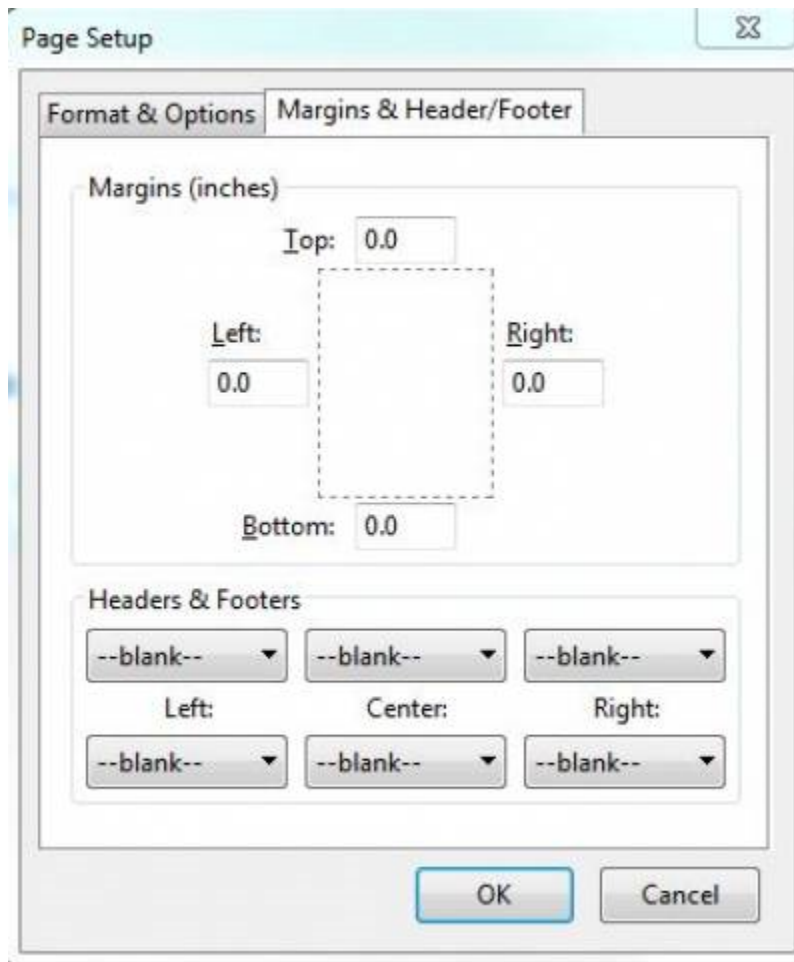
Browser Print Settings

In your browser's print preferences, you will need to disable the margins, headers, and footers for best results.

In Firefox

1. File > Page Setup

2. Format & Options tab: Make sure that “Shrink to Fit Page Width” is not checked.
3. Margins & Header/Footer tab: Set Margins to 0 and all Headers/Footers to blank.
4. Click OK.



In Chrome

1. Menu (three vertical dots in upper-right corner of browser window) > Print
2. Select the label printer.
3. Click More Settings.
4. Check the Paper Size. (For the TSC TPP-247 and other printers, this will be the name of the custom stock you created.)
5. Set Margins to None.
6. Set Scale to 100.
7. If present, uncheck Headers and footers.
8. Click Cancel.

Destination Brother MFC-J885DW Pr...
[Change...](#)

Pages ☒ All
☐ e.g. 1-5, 8, 11-13

Copies

Layout

Color

More settings

Paper size

Pages per sheet

Margins

Scale

Options ☐ Headers and footers
☐ Two-sided
☐ Background graphics

Open the Label Printing Interface

To set-up printing in Evergreen, you will need to open the Label Printing interface. There are four different places where you can print labels:

At cataloging

1. In the Holdings editor, go to the Defaults tab and check the box for Print Item Labels on Save & Exit.
2. Add items or call numbers and items, Save & Exit.
3. Print Labels will open in another tab.
4. Make any edits needed for call number spacing under the Call Number tab.
5. The Print Labels interface will open after Save & Exit until you uncheck the box.

From Item Status

1. Go to the Item Status List View Search > Search for items by barcode or Circulation > Item Status).
2. Scan or enter one or more barcodes.
3. Select the items needing labels (you can print all or a subset).

4. Under the Actions menu, go to Show > Print Labels.

From Item Buckets

1. Place barcodes in bucket for label printing
2. Go to the Item Buckets page (Cataloging > Item Buckets).
3. Open the bucket used for label printing.
4. Select the items needing labels (you can print all or a subset).
5. Under the Actions menu, go to Show > Print Labels.

From Holdings

1. Go to the Holdings View for a title.
2. Select the items needing labels.
3. Under the Actions menu, go to Show > Print Labels.

Creating and Using Print Templates

You may print labels on the fly by using or modifying the default template, you may create and save your own templates, or you may import templates created by another person. You may have multiple templates to accommodate special print jobs such as narrow books.

To create a template

Before modifying any settings, type a name into the Template field and click Save. You may now make any changes needed to your template.



When creating templates, make sure to save often.

To create a different template, type in a new name and click Save. Make any changes needed for the new template.

Using templates



Every time you load the interface, click **Apply** next to the template you want to use, even if it appears to already be selected.

To choose a different template, use the drop-down menu, choose your template, and click Apply.

Call Number Template Tab

Use this section to modify the general format in which the call number will appear on spine labels. This will determine which parts of the call number (if you use prefixes and suffixes) and how inserted free text will appear on the spine label and where default line breaks will appear. Most PINES libraries have not implemented separate call number prefixes or suffixes.

This formatting is saved as part of your templates.

Call Number Template

Call Numbers

Settings

Label Template

Call Number Preview

306 . B9
GAR

Call Number Template

Changes here will wipe out manual changes in the Call Numbers tab.

```
<pre>
{{
  [
    get_cn_and_location_prefix(copy)
    .copy['call_number.label']
    get_cn_and_location_suffix(copy)
  ]
  |
  cn_wrap:settings['webstaff_cat.label.call_number_wrap_filter_width'];settings['webstaff_cat.label.call_number_wrap_filter_height'];copy['call_number.label_class']
}}
</pre>
```

Call Numbers Tab

Use this section to finely control how each spine label prints. For example, if you have a long call number with a skinny book, you may make changes to the display to adjust that individual spine label without affecting other spine labels. There is currently no way to edit information in the pocket label at this point.

Any changes you make on this tab are not saved to your template; they are on the fly changes.



Currently, editing one of several identical call numbers will edit all of them.

The screenshot shows the 'Settings' tab of a label printing application. The 'Formatted Call Numbers' section on the left contains a list of call numbers: 306.89 GAR, 294.5 CHA, and 346.7301 GOL. The 'Label Preview' section on the right shows a preview of the labels, including the call number, the author's name, and the title of the work.

Call Number	Author	Title
306.89 GAR	Garrity, Carla B.	Caught in the middle : protecting the children of high-conflict
294.5 CHA	Chattopadhyaya, Sushakar	Evolution of Hindu sects up to the time of Sankaracarya
346.7301 GOL	Gold, Susan Dudley	Loving v. Virginia : lifting the ban against interracial ma
385 BEE	Beelo, Lockes	Trains in transition

Settings Tab

Use this section to define the size, spacing, and fonts of your spine/pocket labels. Some fields are optional and there to provide additional spacing and font control only if needed.

Print Feed Option: Continuous

<fc #6495ed>Label Set Configuration</fc>

Spine Label vs. Pocket Label: <fc #ff0000>(required)</fc>

- Only printing spine labels – Spine label
- Printing both spine and pocket labels – Pocket label

Number of Labels in set: <fc #ff0000>(required)</fc>

- To print spine and pocket labels – Enter 2
- To print single spine labels – Enter 1
- To print multiple copies of the same label – Enter the number of sets you need. (e.g. to print two copies of the same label, enter 2)

Column 1/Column 2: <fc #ff0000>(required)</fc>

- To print spine and pocket labels – Col 1: spine label || Col 2: pocket label
- To print single spine labels – Col 1: spine label || Col 2: N/A
- To print multiple copies of the same label – Col 1: spine label || Col 2: spine label

Printing a single column of spine labels:

*All settings will be saved with templates

Print Feed Option

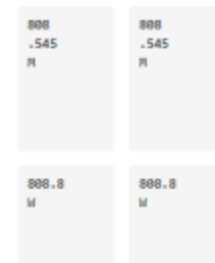
Continuous: ☒ Sheet: ☐

Label Set Configuration 

Spine Label: ☒ Pocket Label: ☐

Number of Labels in Set:

Column 1 Column 2




Printing two copies of a spine label to two columns:

Call Number Template Call Numbers Settings Label Template

*All settings will be saved with templates

Print Feed Option

Continuous: ☒ Sheet: ☐

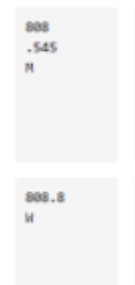
Label Set Configuration 

Spine Label: ☒ Pocket Label: ☐

Number of Labels in Set:

Column 1

Label Preview




Printing a spine and pocket label:

Call Number Template Call Numbers Settings Label Template

*All settings will be saved with templates

Print Feed Option

Continuous: ☒ Sheet: ☐

Label Set Configuration 

Spine Label: ☐ Pocket Label: ☒

Number of Labels in Set:

Column 1 Column 2

Label Preview



<fc #6495ed>Page Settings</fc>

Page Margins:



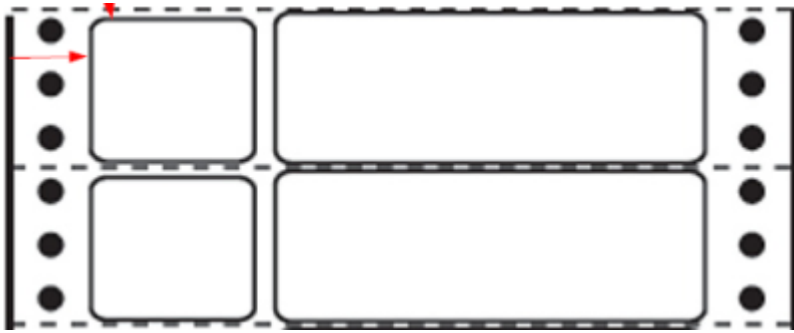
When entering sizes, you must use millimeters (mm), centimeters (cm), or inches (in).



Zeroes must be entered before decimal points, if using. E.g. 0.5in, not .5in

Top: <fc #ff0000>(required)</fc> This is the top outer margin for the overall page printing to a sheet

Left: <fc #ff0000>(required)</fc> This is the left outer margin for the overall page printing



You may want to start with 0 margins and increase by a few millimeters at a time.

Print Grid Size: `<fc #ff0000>(required)</fc>` The number of columns on your label stock. If your stock has one column for a spine label, the setting will be one; if two, then the setting is two. For printing a pair of spine and pocket labels, 2 columns.

Gap Between Rows: `<fc #ff0000>(required)</fc>` The amount of vertical space between one row and the next. Generally, between one horizontal label and the next.

`<fc #6495ed>`**Font & Label Settings**`</fc>`

Item Print Label Font Family: `<fc #6495ed>(optional)</fc>` Defaults to Monospace. Other known supported fonts:

- Arial
- Arial Black
- Comic Sans MS
- Courier
- Courier New
- Garamond
- Georgia
- Helvetica
- Impact
- Times New Roman
- Trebuchet MS
- Verdana

Item Print Label Font Size: `<fc #6495ed>(optional)</fc>` Defaults to 10pt. If modified, should use “pt” after number. (Example: 10pt)

Item Print Label Font Weight: `<fc #6495ed>(optional)</fc>` Defaults to normal. Options: bold, italic

Item Print Label - Inline CSS: `<fc #6495ed>(optional)</fc>` Allows you to inject arbitrary CSS into the item print label template. You can also edit the CSS directly on the Label Template tab.

Item Print Label - Call Number Wrap Filter Height: `<fc #ff0000>(required)</fc>` How many lines

can be printed on the spine label

Item Print Label - Call Number Wrap Filter Width: <fc #ff0000>(required)</fc> How many characters can be printed on the spine label before forcing the number to wrap

Item Print Label - Left Margin for Spine Label: <fc #ff0000>(required)</fc> How much space to insert between the left side of the spine label and the beginning of the text. You may need to adjust this for proper spacing.

Item Print Label - Left Margin for Pocket Label: <fc #ff0000>(required for pocket labels)</fc> How much space to insert between the left side of the pocket label and the beginning of the text. You may need to adjust this for proper spacing.

Item Print Label - Height for Spine Label: <fc #ff0000>(required)</fc> Overall height of the spine label

Item Print Label - Width of the Spine Label: <fc #ff0000>(required)</fc> Overall width of the spine label

Item Print Label - Height for Pocket Label: <fc #ff0000>(required for pocket labels)</fc> Overall height of the pocket label

Item Print Label - Width of the Pocket Label: <fc #ff0000>(required for pocket labels)</fc> Overall width of the pocket label

Example Font & Label Settings:

Font & Label Settings

These settings do get saved with templates and will override corresponding Library Settings.

Item Print Label Font Family ⓘ	<input type="text" value="Arial"/>
Item Print Label Font Size ⓘ	<input type="text" value="10pt"/>
Item Print Label Font Weight ⓘ	<input type="text" value="bold"/>
Item Print Label - Inline CSS ⓘ	<input type="text"/>
Item Print Label - Call Number Wrap Filter Height ⓘ	<input type="text" value="7"/>
Item Print Label - Call Number Wrap Filter Width ⓘ	<input type="text" value="5"/>
Item Print Label - Left Margin for Spine Label ⓘ	<input type="text" value="0.15in"/>
Item Print Label - Left Margin for Pocket Label ⓘ	<input type="text"/>
Item Print Label - Height for Spine Label ⓘ	<input type="text" value="1.5in"/>
Item Print Label - Width for Spine Label ⓘ	<input type="text" value="1in"/>
Item Print Label - Height for Pocket Label ⓘ	<input type="text" value="1.5in"/>
Item Print Label - Width for Pocket Label ⓘ	<input type="text" value="2.675in"/>



Save your work before you proceed.

Label Template Tab

If you need to control the actual content that appears on the pocket label, or if you need to make extra changes to the CSS, you may do it on this tab.

Be sure to complete filling out the Settings tab and Save your work before editing the Label Template tab.

To add fields to the pocket label, scroll to the bottom section of the Label Template tab. You will see the code that has been generated for the label layout you have defined. You may add additional fields in this section, change the order of the fields, or modify how the fields wrap. The highlighted area below shows the area you may edit to add or modify fields. Be careful not to modify the rest of the code on the page, or it can break your template. (If this happens, click Default to reset the template to default settings and start over.)

Instructions for setting up spine & pocket labels

Call Number Template
Call Numbers
Settings
Label Template

```

init="parentindex = $index" ng-repeat="row in label_output_copies">
<tr>
<td style="border: 0 solid transparent; padding: {{parentindex %
toolbox_settings.page.dimensions.rows === 0 && toolbox_settings.feed_option.selected
=== 'sheet' && parentindex > 0 ?
toolbox_settings.page.space_between_labels.vertical.size : parentindex > 0 ?
toolbox_settings.page.space_between_labels.vertical.size : 0}} 0 0 {{$index === 0 ?
toolbox_settings.page.margins.left.size : col.styl ? col.styl :
toolbox_settings.page.space_between_labels.horizontal.size}};" ng-repeat="col in
row.columns">
<pre class="{{col.cls}}" style="border: none; margin-bottom: 0; margin-top: 0; overflow:
hidden;" ng-if="col.cls === 'spine'">
{{col.c ? get_cn_for(col.c) : ""}}</pre>
<pre class="{{col.cls}}{{parentindex % toolbox_settings.page.dimensions.rows === 0 &&
parentindex > 0 && toolbox_settings.feed_option.selected === 'sheet' ? 'page-break' :
''}}" style="border: none; margin-bottom: 0; margin-top: 0; overflow: hidden;" ng-if="col.cls
=== 'pocket'">
{{col.c ? col.c.barcode : ""}}
{{col.c ? col.c['call_number.label'] : ""}}
{{col.c ? get_bib_for(col.c).author : ""}}
{{col.c ? (get_bib_for(col.c).title | wrap:28:'once':' ') : ""}}
</pre>
</td>
</tr>
</table>

```

If you do not understand the HTML and CSS that is shown, export the template you have to an external file, then attach it to a [Help Desk](#) ticket along with what you are trying to do, and the PINES staff will assist you.

Common Fields to Add or Modify

Library Policy (Short) Name: `{{col.c ? col.c['call_number.owning_lib.shortname'] : ''}}`

Shelving Location: `{{col.c ? col.c['location.name'] : ''}}`

Publication Date: `{{col.c ? col.c['call_number.record.simple_record.pubdate'] : ''}}`

Title (limited to 30 characters): `{{col.c ? (get_bib_for(col.c).title | limitTo:30) : ''}}`

Author (limited to 30 characters): `{{col.c ? (get_bib_for(col.c).author | limitTo:30) : ''}}`

Price: `{{col.c ? col.c['price'] : '' | currency}}`



[Click here for a list of all available fields](#)

You can add multiple fields to one line with spaces in between the fields. For example, if you want to add the library's policy name after the barcode, enter it as such

```
<pre class="{{col.cls}}"{{parentIndex % toolbox_settings.page.dimensions.rows === 0 &&
parentIndex > 0 && toolbox_settings.feed_option.selected === 'sheet' ? ' page-break' :
''}}" style="border: none; margin-bottom: 0; margin-top: 0; overflow: hidden;" ng-
if="col.cls === 'pocket'">
{{col.c ? col.c.barcode : ''}} {{col.c ? col.c['call_number.owning_lib.shortname'] : ''}}
{{col.c ? col.c['call_number.label'] : ''}}
{{col.c ? get_bib_for(col.c).author : ''}}
{{col.c ? (get_bib_for(col.c).title | limitTo:20) : ''}}
</pre>
```

As long as you **exactly** paste in the given code for a field (like shelving location or title), the fields will be arranged on the pocket label exactly as you place them in the Label Template tab.

For example, if you enter the code for Title, add in 5 spaces, and then the code for shelving location on the same line, on your pocket label it will have the Title, 5 spaces, and then the shelving location. See below:

<code>{{col.c ? col.c.barcode : ''}}</code>	TITLE	31033002717175	TITLE
		636 7 RICHARDSON I	

Text Rotation for Skinny Spine Labels

Several libraries have requested the ability to print the spine labels sideways to be able to print more characters in one row on a single spine label for thinner spines. To do this requires editing the code on the Label Template tab and adjusting the settings for call number wrapping.

1. Look for this section towards the bottom of the page:

```
<pre class="{{col.cls}}" style="border: none; margin-bottom: 0; margin-top: 0; overflow:
hidden;" ng-if="col.cls === 'spine'"> {{col.c ? get_cn_for(col.c) : ''}}</pre>
```

And replace it with this:

```
<pre class="{{col.cls}}" style="border: none; margin-bottom: 0px; margin-top: 0px;
overflow: hidden;" ng-if="col.cls === 'spine'"><div style="transform: rotate(90deg); margin-
```

```
top:35px;"> {{col.c ? get_cn_for(col.c) : ""}}</div></pre>
```

2. Go to the Setting tab and change the “Item Print Label - Call Number Wrap Filter Height” to 1 (for one line)

3. Change the “Item Print Label Call Number Wrap Filter Width” to at least 15 (or however many characters can print on the one line).

Moving the Call Number Down on the Spine Label

You can use the 'Item Print Label - Inline CSS Field' to fine-tune some of the settings. For example, if you want your spine labels to start partway down the label rather than at the top of the label, you can add this text into the Inline CSS field:

```
.spine{padding-top:30px}
```

Different Font Size for Spine and Pocket Labels

You can make the spine label have a different font-size by using the 'Item Print Label - Inline CSS Field' like this (where 14pt is the desired font size):

```
.spine{font-size:14pt;}
```

Importing and Exporting Templates

After you create your template(s), it is a good idea to save a backup copy of it in case you need to switch computers or in case you lose your current settings. You may also want to share your templates with other staff. If you have multiple templates, they will export as one file; there is no need to export each template individually.

1. Click the Export button.
2. Save it to the location of your choosing.
3. You may change the name of the file, but do not change the file extension.

To load saved templates, click Import and select the template file. Templates with the same name will automatically overwrite existing templates. Templates with different names will be added to the workstations existing templates.

Printing to a Third Party Program

Exporting a CSV File

1. Create a list of items (either in an Item Status List or an Item Bucket).
2. Use the column picker to make sure that all of the data you need to export is visible and in the correct order.
3. Click the dropdown arrow to the right of the page navigator (the same arrow you use to choose your columns).
4. Click Download Full CSV.
5. Name the file whatever you like, and save it to a location that is easy to access.

At this point, you can use the CSV file with Bartender or another third party software following their standard procedures.

From:

<https://pines.georgialibraries.org/dokuwiki/> - **PINES Documentation**

Permanent link:

<https://pines.georgialibraries.org/dokuwiki/doku.php?id=cat:labelprinting-continuous&rev=1551390855>

Last update: **2019/02/28 21:54**

